

Friday 29 January 2021

The end of another busy week in school and at home. It has been good for wellbeing to finish off with a little sunshine. With February round the corner, we all look forward to brighter days and more signs of spring.

We hope you enjoy our garden update and bird watching articles- a reminder that it is the Great Birdwatch this weekend.

We have thought about the story of the Chinese Bamboo this week, to remind us that success and achievement sometimes take time, patience and perseverance to grow.

Thank you to staff, pupils and families for keeping going and growing this week...

Take care and stay well,
Mrs Constantine



Parent and Carer Communication
Spring term 2021-22



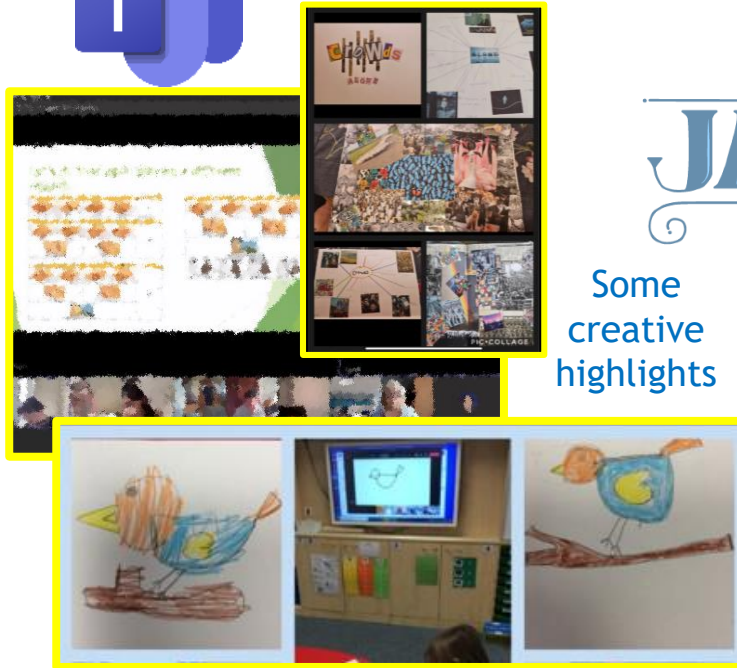
Weekly Update



JANUARY

Some
creative
highlights

Well done to
everyone engaging
in sessions online!



Smashing to see some
making and baking from
Birch class!



Please follow guidance <https://www.gov.uk/coronavirus>
to keep safe:



Kingswode Hoe School
What we plant today, we grow tomorrow



School Garden Update

Since we began our new school garden project many wonderful things have happened.

- The new raised beds and poly tunnel have been installed
- A log store and tyre planters have been created
- 400 tree saplings have been planted
- Crops have been planted and harvested
- 600 flower bulbs were planted to brighten up areas of the school grounds.



Our thanks to Bulbs4kids, The Tree Council and One Man and His Log for their contributions.

As you can imagine to achieve all this in such a short space of time requires a lot of adult and pupil support and engagement. Particular thanks go to Jordan and Taylor for all their hard work with setting up the different areas and of course Mr Burgoyne, our site manager, and Mrs Wilson our Forest School practitioner for everything they have done.

See our website for more details about this important part of our Outdoor Learning curriculum from Mrs Wilson



Parent and Carer Communication
Spring term 2021-22

Kingswode Hoe School
What we plant today, we grow tomorrow



Garden Birds Sighting Checklist

Bird	Sighted Have you seen this bird? Tick the box for yes or leave it blank for no.	Where? Where have you seen this bird?
Robin	<input checked="" type="checkbox"/>	Bird Table
Magpie	<input checked="" type="checkbox"/>	on the grass
Sparrow	<input checked="" type="checkbox"/>	House
Blackbird	<input checked="" type="checkbox"/>	on grass
Blue tit	<input checked="" type="checkbox"/>	tree
Goldfinch	<input checked="" type="checkbox"/>	At the pond

Big Schools Birdwatch 2021

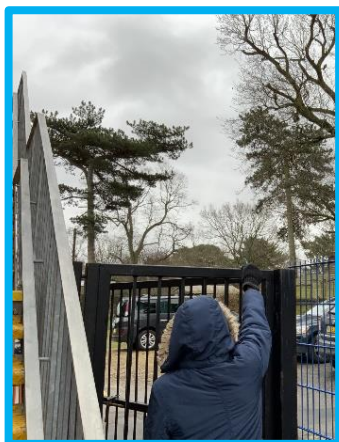


How did you get on with your bird watching?

This week we asked you to join in with the RSPB Big Schools Birdwatch. Why? The RSPB collect lots of data to look at what species of birds are around and how many to help inform all their work. Last year on the birdwatch, 7.8 million birds were seen!

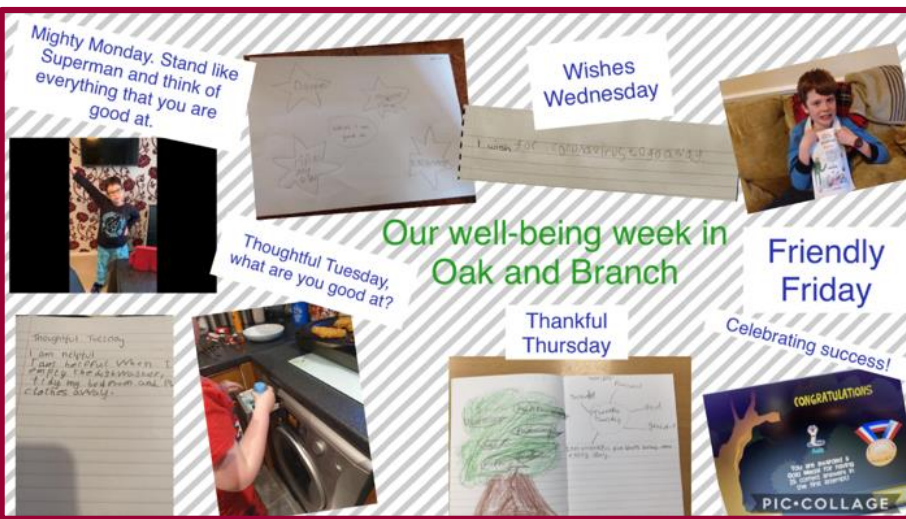
Some pupils watched BBC Teach Live to learn all about the purpose of the birdwatch and to learn more about birds. They made birdfeeders to hang on the school fence to encourage the birds to visit our playground.

Well done to all of you at home that completed the birdwatch sheet. Your data can now be entered on the RSPB website www.rspb.org.uk
You still have this weekend to gather your bird data.

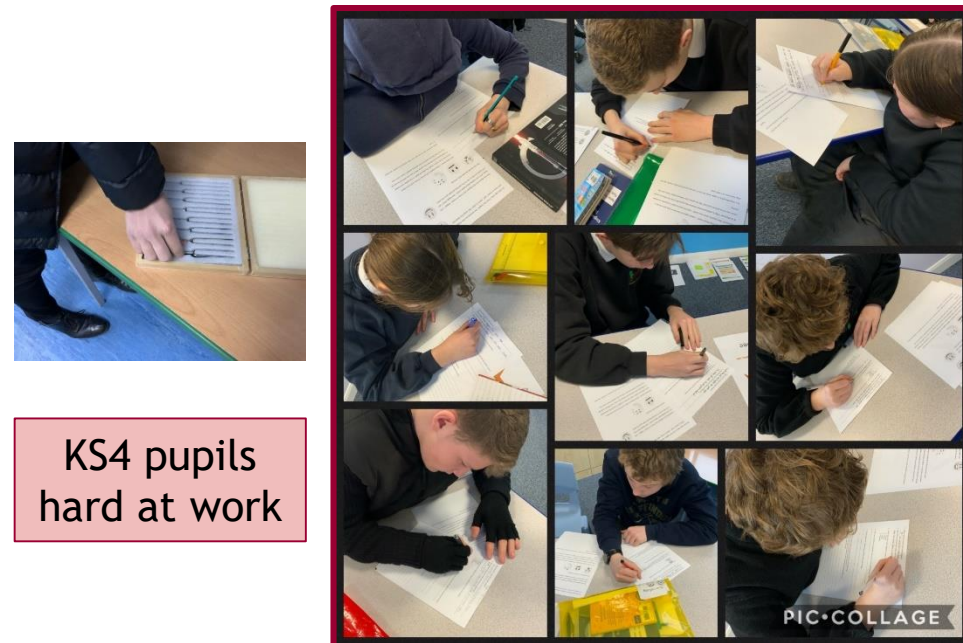


Big
Garden
Birdwatch
29-31 January 2021

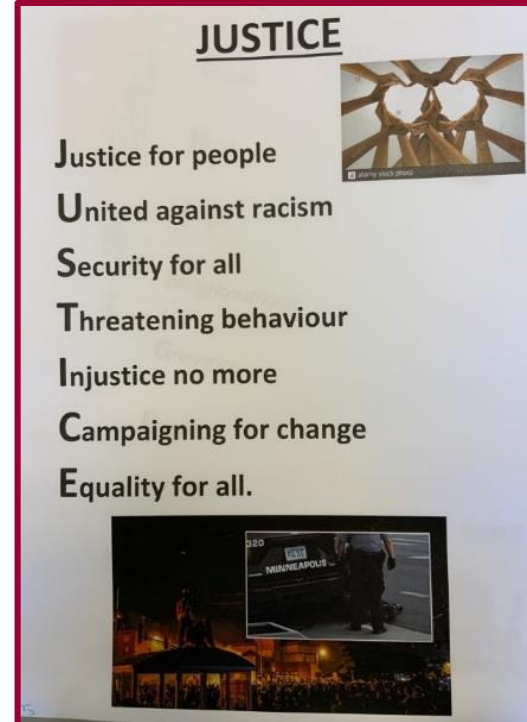




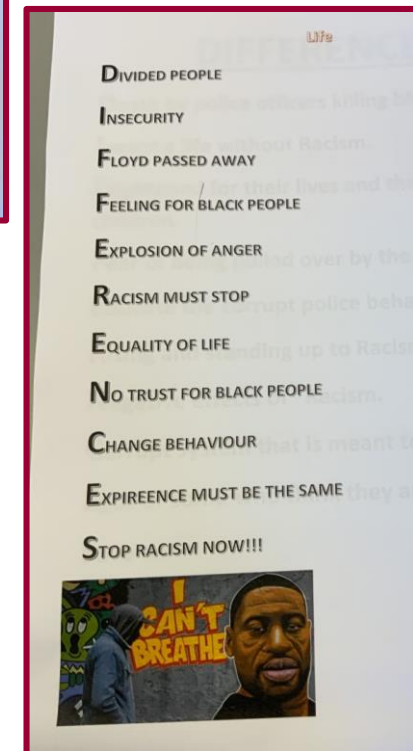
KS2 Wellbeing week activities



KS4 pupils hard at work



Poems about Racial Equality by Year 9 pupils in school



Friday 29 January 2021

- ❖ Children's Mental Health week 1-7 February
- ❖ Please see The Essex Child and Family Wellbeing Service (ECFWS) monthly newsletter for parents which focuses on the topic of Mental Health this month, more important than ever at this challenging time
- ❖ If you need to send any work in to be forwarded to staff or printed out in school- please email to Mrs McMillan: contactus@kingswodehoe.com

Theme of the week:
Community
Those around us



Notices



<https://www.childrensmentalhealthweek.org.uk/>

"We have a long way to go" sighed the boy.
"Yes but look how far we have come" said the horse.



Charlie Mackay



<https://www.kingswodehoe.com/remote-learning>

Learning
at Home



Some resources that may be useful for you to support learning at home...

- ❖ Some very useful ideas to support Science, Technology, Engineering and Maths (STEM) learning can be found here.

<https://www.stem.org.uk/home-learning>

- ❖ Click on the link below for some home learning resources to help your child in the kitchen.

<https://www.foodafactoflife.org.uk/remote-learning/>

- ❖ See the RSPB website for games and activities to do at home

<https://www.rspb.org.uk/fun-and-learning/for-kids/games-and-activities/activities/>

If you try out any of the activities above, please upload any photos or videos to Evidence for Learning or share via

contactus@kingswodehoe.com as we would love to see the pupils engaging with the links we send out.

Thank you for all you are doing to support pupils at home.



Don't forget the Teenage Cancer Trust squats challenge is happening in February.

Big
Garden
Birdwatch
29-31 January 2021

